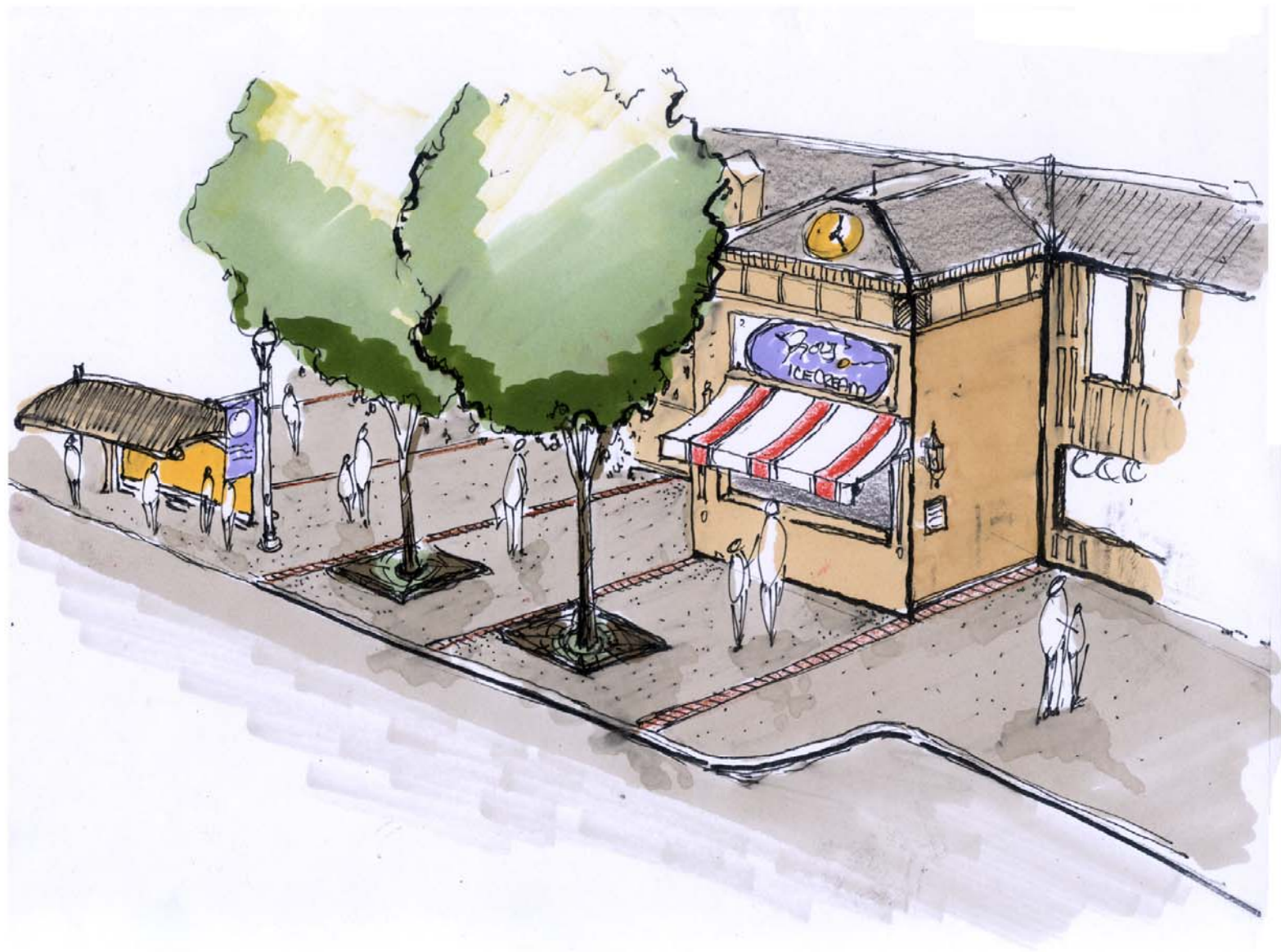


On May 24, 2011, community members met during Vision-to-Action Lexington to propose ways that underutilized properties can be transformed into spaces where we can live, work and play.

Artist Brad Biliter, ASLA Parks Designer with LFUCG Division of Parks and Recreation, highlighted some of the ideas your neighbors presented in these sketches.



Lexington Zoo—An Educational Opportunity



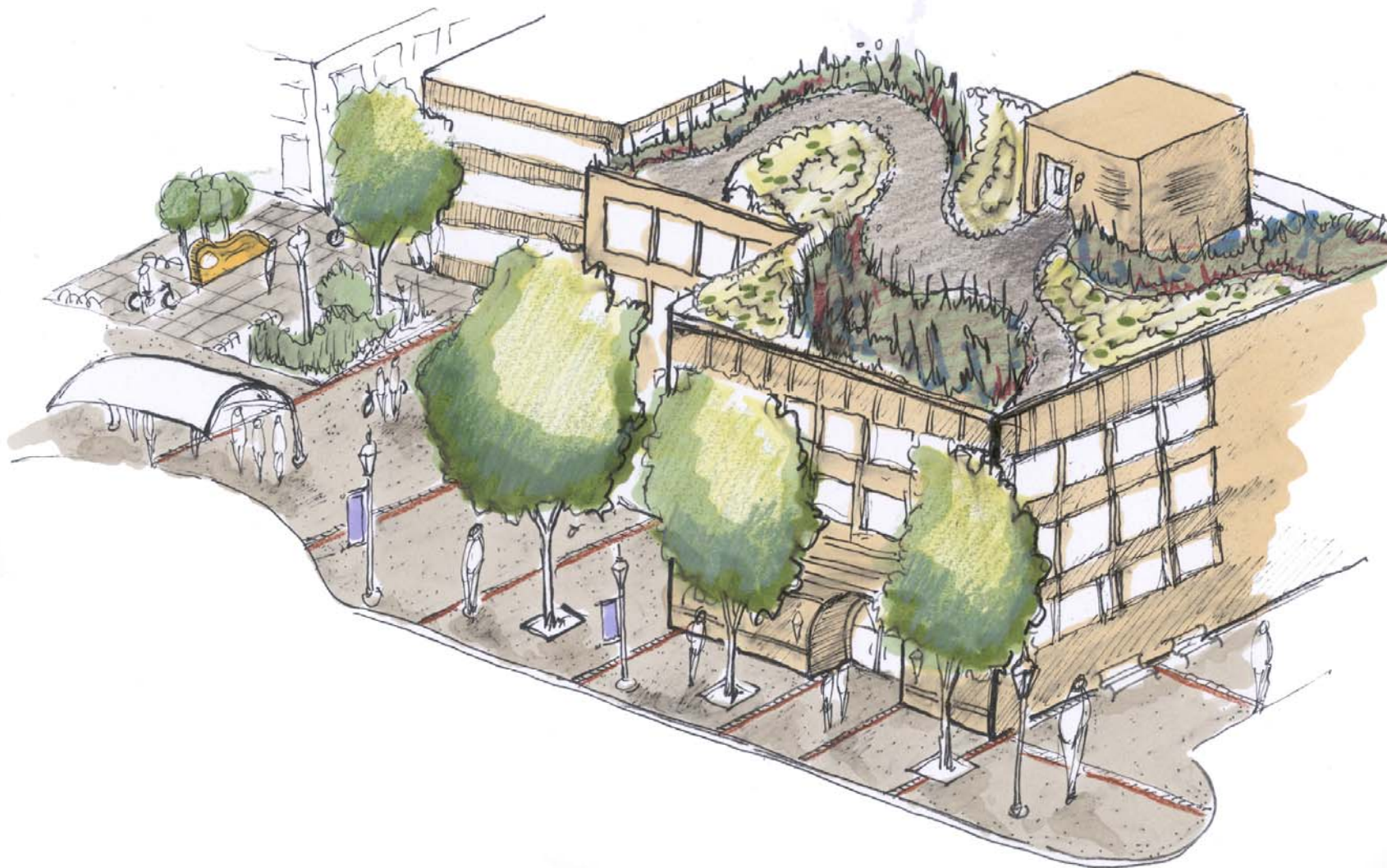
Ice Cream Parlour near Bus Stop



Town Branch and Equine Trail



Public Art and Trail Lighting



Green Roof at Trail Head



Urban Gardening